

Installing and Configuring LiveCycle



This is an online bonus article for Chapter 7 of *Paperless: Real-World Solutions with Adobe Technology*. This article details some basic information about installing and configuring LiveCycle ES.

Depending on your enterprise infrastructure and your server environment, installing and configuring LiveCycle ES can be a complex procedure. Often, it is wise to work directly with Adobe or an experienced Adobe partner. This article will not cover everything you need to know about LiveCycle ES installation, but it will introduce some important concepts, ideas, and Adobe documentation.

LiveCycle can be used with many different operating systems, application servers, and databases, including:

Operating Systems

- Microsoft Windows
- Red Hat Enterprise Linux
- SUSE Linux Enterprise Server
- IBM AIX
- Sun Solaris

Application Servers

- JBoss
- Oracle WebLogic
- IBM WebSphere

Databases

- Microsoft SQL Server
- MySQL
- IBM DB2
- Oracle

Adobe supports a turnkey and a manual installation. The turnkey installation is often the right choice for first-time users. However, if you are integrating LiveCycle with your enterprise infrastructure, you should perform a manual installation (**Figure 1**).

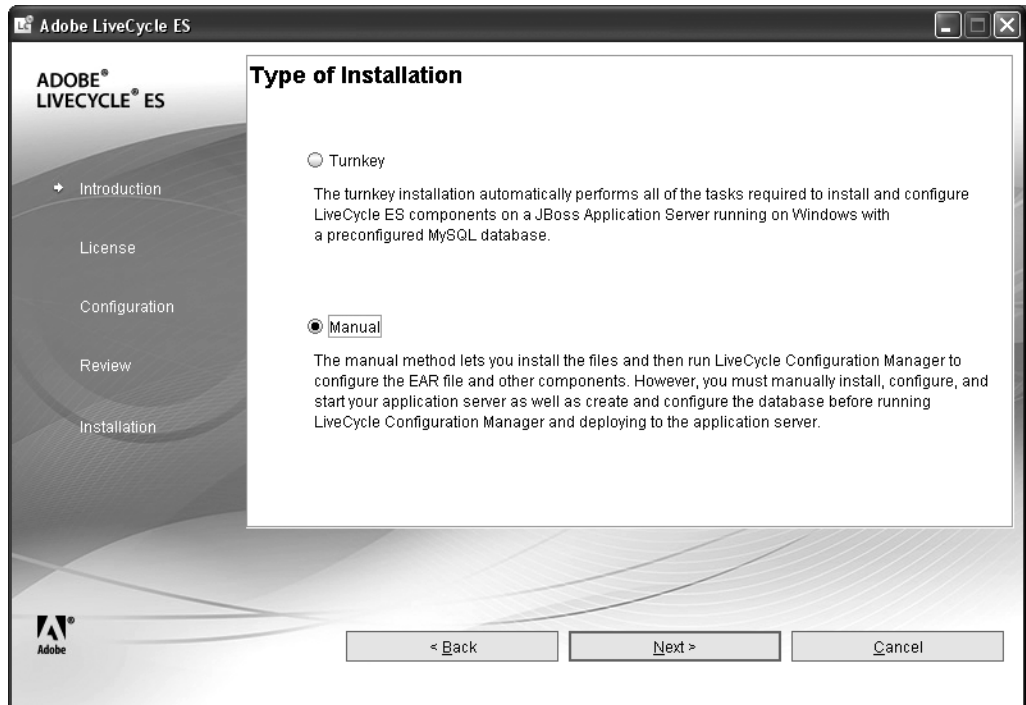


Figure 1 The introduction screen of the LiveCycle ES2 installer.

Using Turnkey Installation

The turnkey installation in LiveCycle ES is simple but limited. A single installation wizard guides you through the process, installing and configuring your application server, your database, and your LiveCycle solution components. However, this installation method is limited because it works only with Windows and the MySQL database. Be sure to follow the Adobe document, “Installing and Deploying LiveCycle ES Using Turnkey” during a turnkey installation. Note that LiveCycle ES2 comes with a more flexible turnkey installation.

Using Manual Installation

Adobe offers a number of excellent, step-by-step installation guides for manual installations of LiveCycle. These installation guides are listed in the Appendix.

You should start with one of the preparation documents listed in the Appendix. For instance, if you want to do a manual installation of LiveCycle ES with JBoss and Microsoft SQL server, follow these steps:

1. Read and execute the steps in the “Preparing to Install LiveCycle ES (Single Server)” document. It includes many useful suggestions, such as setting the minimum server memory to equal the size of the free memory on the server.
2. Read and execute the steps in the “Installing and Deploying LiveCycle ES for JBoss” document. You will use the installer and the LiveCycle Configuration Manager to install and configure your LiveCycle server during this step.

Installing the Development Environment

The installation and configuration of your development environment is significantly easier than installing LiveCycle. You need only a Windows-based computer, the installation documentation, and the LiveCycle Workbench Setup program. The installation documentation, "Installing Your Development Environment," listed in the Appendix, tells you what you need to do before and during the process. It is important to note that the Workbench Setup program will also install LiveCycle Designer. If you already have a version of Designer installed on your computer, be sure to review the "Designer ES Installation Considerations" section in the "Installing Your Development Environment" document.

Back to the Book

Now that you have learned the fundamentals of LiveCycle ES in Chapter 7, go back to the book to see how people are using ES every day to streamline their business processes and document generation.